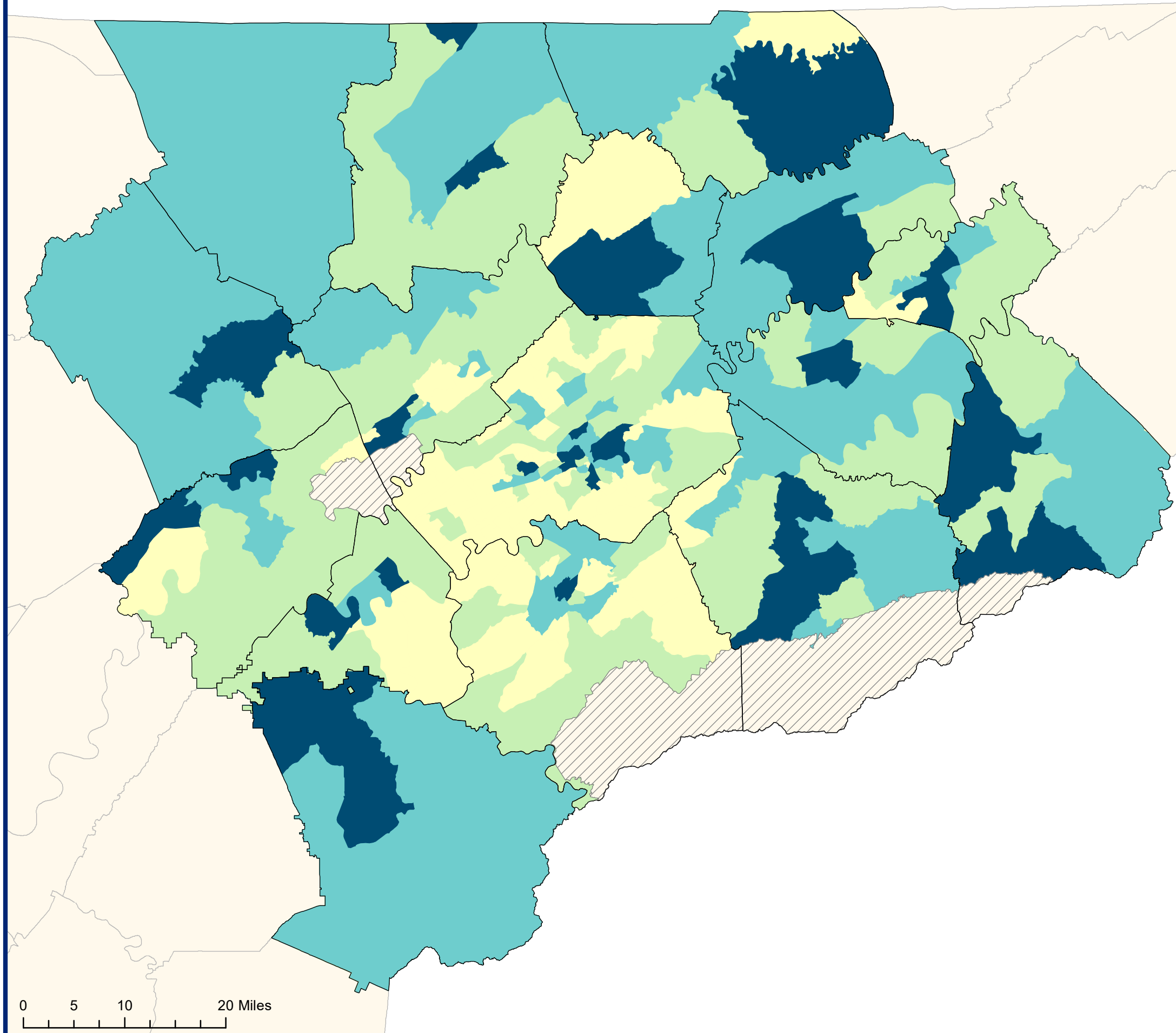


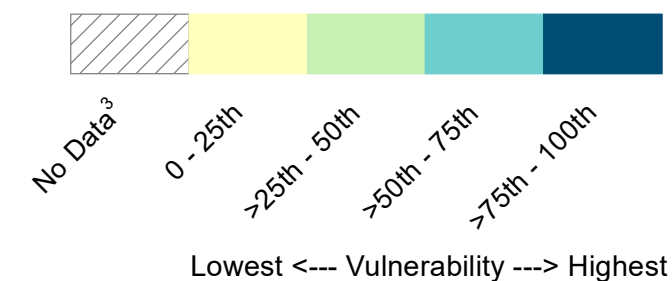
# Social Vulnerability Index, Knox/East Tennessee Healthcare Coalition



## Overall Social Vulnerability

Social vulnerability refers to a community's capacity to prepare for and respond to the stress of hazardous events ranging from natural disasters, such as tornadoes or disease outbreaks, to human-caused threats, such as toxic chemical spills. This Social Vulnerability Index (SVI 2014)<sup>1</sup> map depicts the social vulnerability of communities, at the census tract level, throughout the Knox/East Tennessee Healthcare Coalition. SVI 2014 groups fifteen census-derived factors<sup>2</sup> into four themes that summarize the extent to which the area is socially vulnerable to disaster. The factors include economic data as well as data regarding education, family characteristics, housing, language ability, ethnicity, and vehicle access. Overall Social Vulnerability combines all the variables to provide a comprehensive assessment.

### Percentile Ranking



**Notes:** <sup>1</sup>The SVI combines percentile rankings of US Census American Community Survey (ACS) 2010-2014 variables, for Tennessee, at the census tract level.

<sup>2</sup>Poverty, Unemployed, Per Capita Income, No High School Diploma, Eldery, Children, Single-parent household, Aged 5 and over with a Disability, Minority, English Language Ability, Multi-unit household, Mobile Homes, Crowding, No Vehicle, Group Quarters

<sup>3</sup>Census tracts with near 0 population

**Data Sources:** Centers for Disease Control and Prevention/Agency for Toxic Substances and Disease Registry/Geospatial Research, Analysis, and Services Program. Social Vulnerability Index 2014 State Database.

<https://svi.cdc.gov/SVIDataToolsDownload.html>. Accessed 8 Aug 2017.

**Projection:** NAD 1983 StatePlane Tennessee FIPS 4100

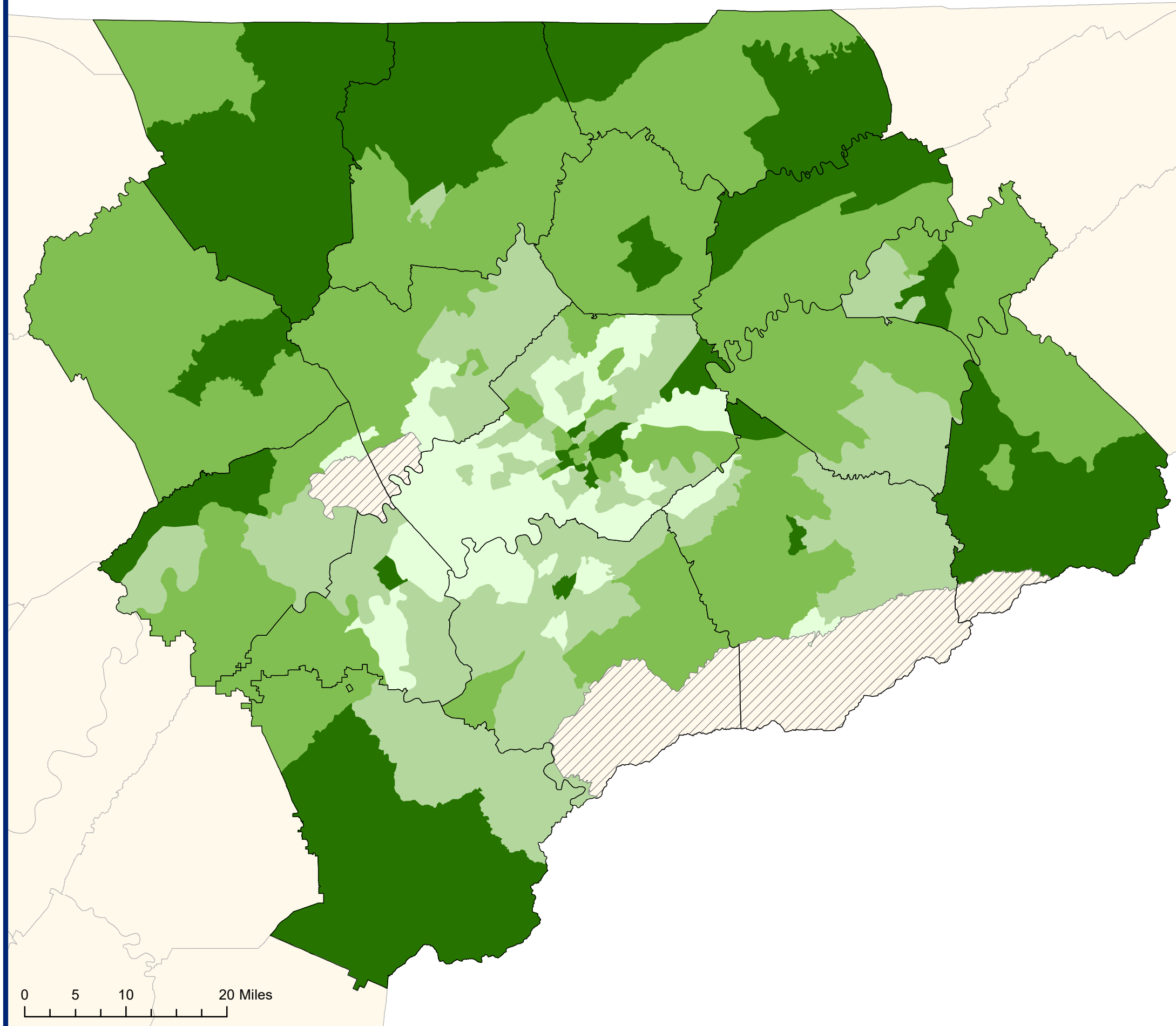
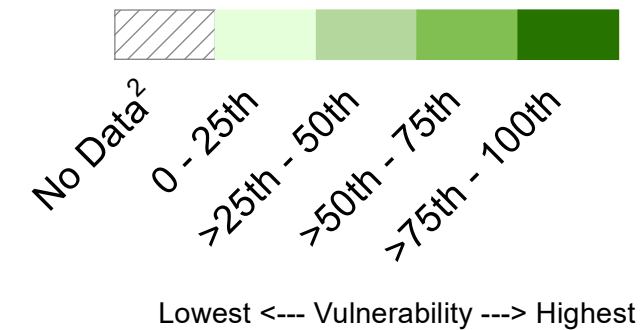
# Social Vulnerability Index, Knox/East Tennessee Healthcare Coalition

## SVI Theme: Socioeconomic Status

Social vulnerability refers to a community's capacity to prepare for and respond to the stress of hazardous events ranging from natural disasters, such as tornadoes or disease outbreaks, to human-caused threats, such as toxic chemical spills. This map depicts the social vulnerability of communities based on socioeconomic status. The census-derived factors<sup>1</sup> that make up the socioeconomic theme include:

- Poverty
- Unemployed
- Per capita income
- No high school diploma

### Percentile Ranking



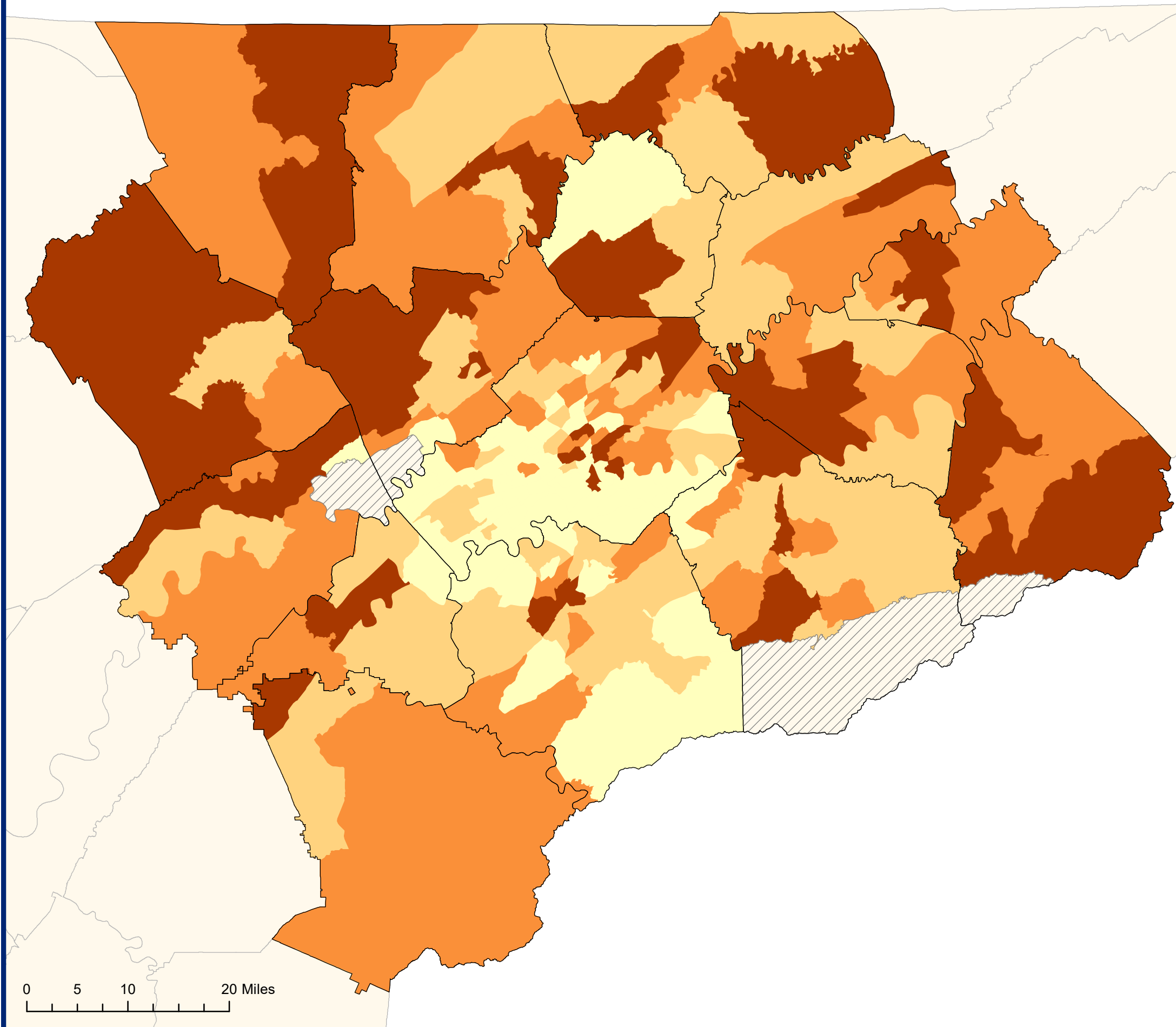
**Notes:** <sup>1</sup>Percentage of persons below poverty, Percentage of civilian (age 16 and older) unemployed, Per capita income, Percentage of persons with no high school diploma  
<sup>2</sup>Census tracts with near 0 population

**Data Sources:** Centers for Disease Control and Prevention/Agency for Toxic Substances and Disease Registry/Geospatial Research, Analysis, and Services Program. Social Vulnerability Index 2014 State Database.

<https://svi.cdc.gov/SVIDataToolsDownload.html>. Accessed 8 Aug 2017.

**Projection:** NAD 1983 StatePlane Tennessee FIPS 4100

# Social Vulnerability Index, Knox/East Tennessee Healthcare Coalition

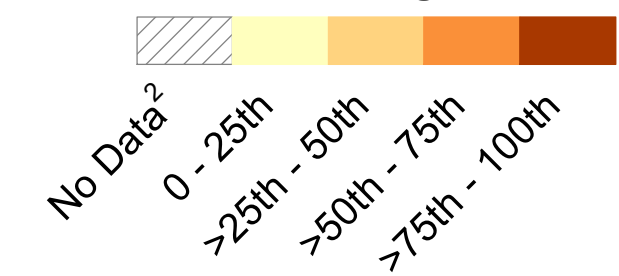


## SVI Theme: Household Composition

Social vulnerability refers to a community's capacity to prepare for and respond to the stress of hazardous events ranging from natural disasters, such as tornadoes or disease outbreaks, to human-caused threats, such as toxic chemical spills. This map depicts the social vulnerability of communities based on household composition. The census-derived factors<sup>1</sup> that make up the household composition theme include:

- Persons aged 65 and older
- Persons aged 17 and younger
- Persons with a disability
- Single-parent households

### Percentile Ranking



Lowest <--- Vulnerability ---> Highest

**Notes:** <sup>1</sup>Percentage of persons aged 65 and older, Percentage of persons aged 17 and younger, Percentage of civilian noninstitutionalized population with a disability, Percentage of single parent households with children under 18 <sup>2</sup>Census tracts with near 0 population

**Data Sources:** Centers for Disease Control and Prevention/Agency for Toxic Substances and Disease Registry/Geospatial Research, Analysis, and Services Program. Social Vulnerability Index 2014 State Database.

<https://svi.cdc.gov/SVIDataToolsDownload.html>. Accessed 8 Aug 2017.

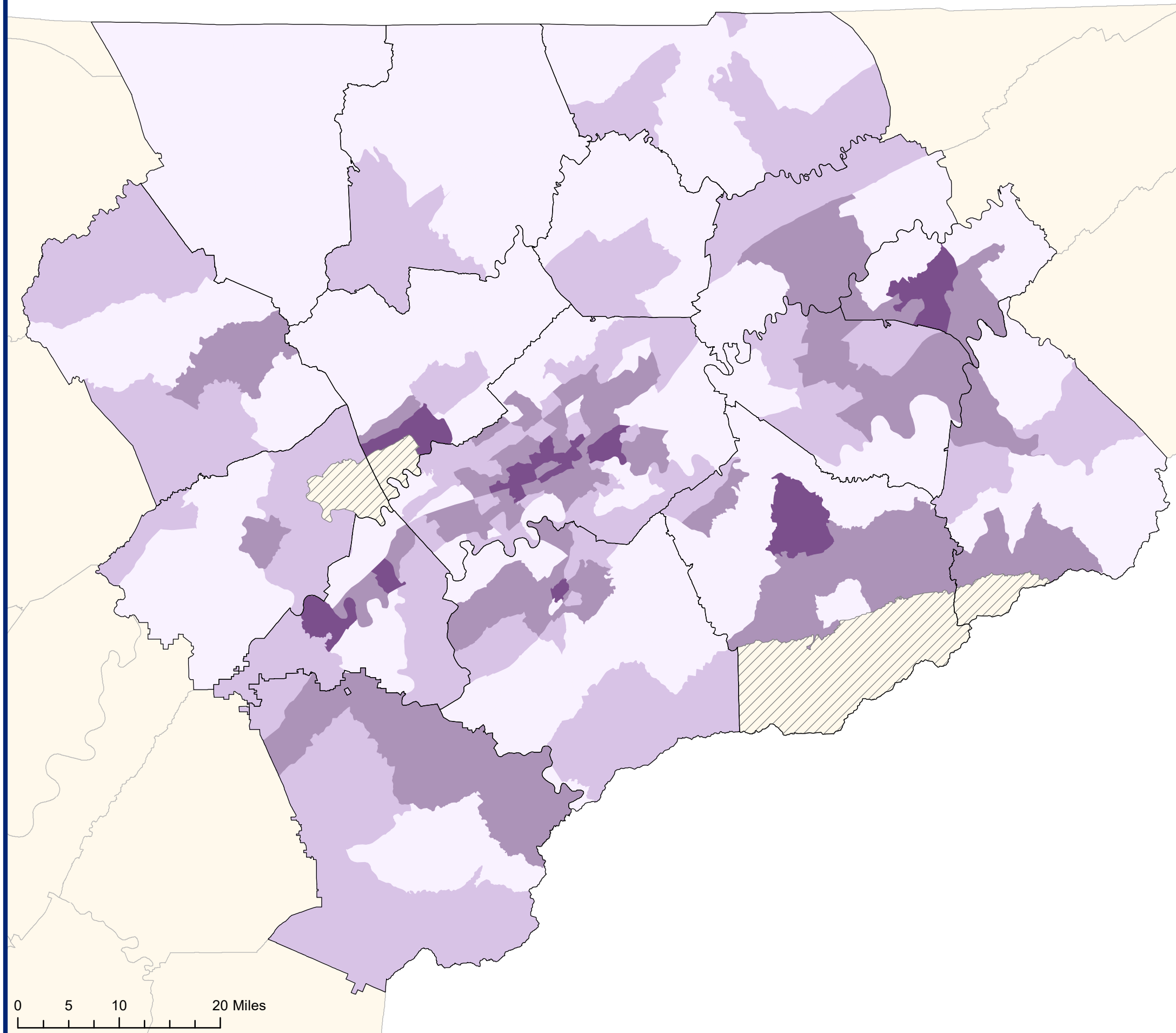
**Projection:** NAD 1983 StatePlane Tennessee FIPS 4100

# Social Vulnerability Index, Knox/East Tennessee Healthcare Coalition

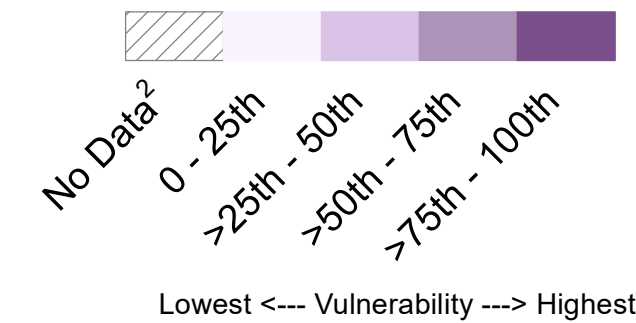
## SVI Theme: Race/Ethnicity/Language

Social vulnerability refers to a community's capacity to prepare for and respond to the stress of hazardous events ranging from natural disasters, such as tornadoes or disease outbreaks, to human-caused threats, such as toxic chemical spills. This map depicts the social vulnerability of communities based on race, ethnicity, and language. The census-derived factors<sup>1</sup> that make up the race, ethnicity, and language theme include:

- Minority status
- English language ability



### Percentile Ranking



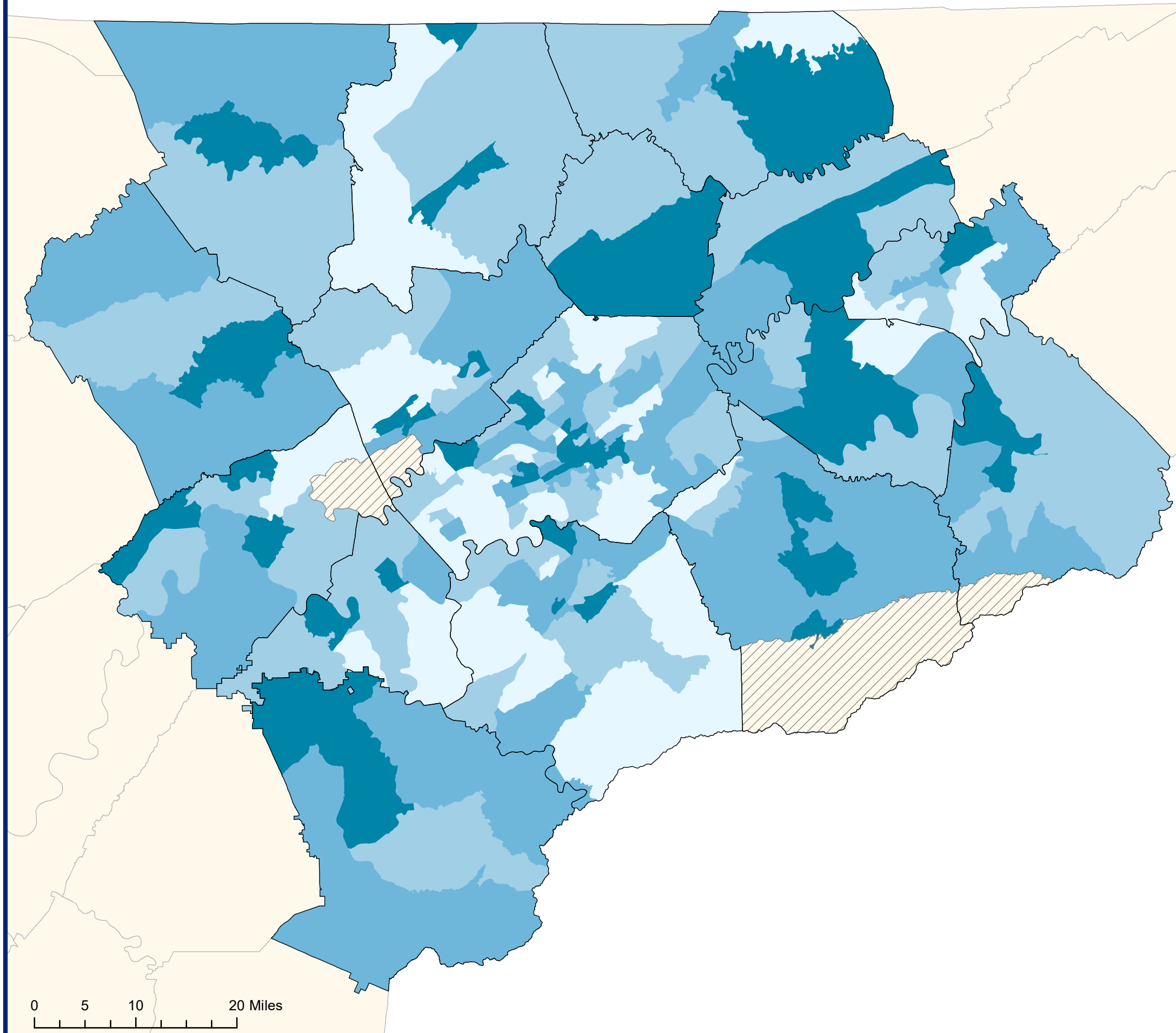
**Notes:** <sup>1</sup>Percentage minority (all persons except white, non-Hispanic), Percentage of persons (age 5 and older) who speak English "less than well" <sup>2</sup>Census tracts with near 0 population

**Data Sources:** Centers for Disease Control and Prevention/Agency for Toxic Substances and Disease Registry/Geospatial Research, Analysis, and Services Program. Social Vulnerability Index 2014 State Database.

<https://svi.cdc.gov/SVIDataToolsDownload.html>. Accessed 8 Aug 2017.

**Projection:** NAD 1983 StatePlane Tennessee FIPS 4100

# Social Vulnerability Index, Knox/East Tennessee Healthcare Coalition

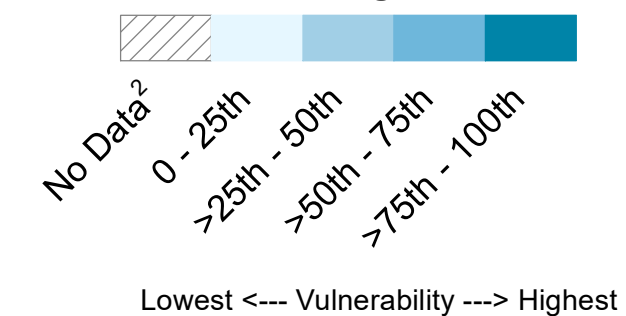


## SVI Theme: Housing/Transportation

Social vulnerability refers to a community's capacity to prepare for and respond to the stress of hazardous events ranging from natural disasters, such as tornadoes or disease outbreaks, to human-caused threats, such as toxic chemical spills. This map depicts the social vulnerability of communities based on housing and transportation. The census-derived factors<sup>1</sup> that make up the housing and transportation theme include:

- Multi-unit structures
- Mobile homes
- Crowding
- No Vehicle
- Group Quarters

### Percentile Ranking



**Notes:** <sup>1</sup>Percentage of housing in structures with 10 or more units, Percentage of mobile homes, Percentage of occupied housing units with more people than rooms, Percentage of households with no vehicle available, Percentage of persons in institutionalized group quarters <sup>2</sup>Census tracts with near 0 population  
**Data Sources:** Centers for Disease Control and Prevention/Agency for Toxic Substances and Disease Registry/Geospatial Research, Analysis, and Services Program. Social Vulnerability Index 2014 State Database. <https://svi.cdc.gov/SVIDataToolsDownload.html>. Accessed 8 Aug 2017.  
**Projection:** NAD 1983 StatePlane Tennessee FIPS 4100